

# Partridge Hill

## APARTMENTS

Partridge Hill offers a combination of modern, affordable, private community living in a centrally located area of North Greenbush. Conveniently located on Route 4 with easy access to I-90.

### *One, Two, and Two Bedroom w/Den Apartments*

- ◆ Large luxurious units with generous closet and storage space
- ◆ Fully applianced kitchen, including range, refrigerator, dishwasher and garbage disposal
- ◆ Ceramic tile in kitchen and baths
- ◆ Wall to wall high density carpeting
- ◆ Intercom security entrance
- ◆ Individually controlled gas heat and central air conditioning
- ◆ Covered private patios and balconies
- ◆ Pre-wired for cable TV and telephone
- ◆ Professionally engineered for sound proofing between units
- ◆ Conveniently located laundry rooms in each building
- ◆ Private enclosed garages available
- ◆ Clubhouse with community room for parties or meetings including kitchen facilities
- ◆ Large swimming pool and exercise facility
- ◆ Picnic areas with grills
- ◆ Professional on-site maintenance and management staff

# Partridge Hill

## APARTMENTS

5 Valley View Boulevard  
Rensselaer, New York 12144

**(518) 283-0131**



# Partridge Hill

## APARTMENTS

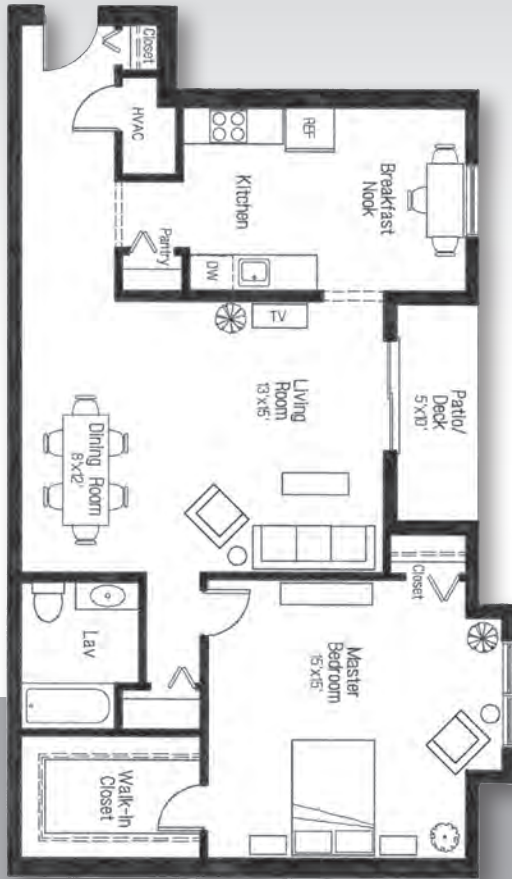
5 Valley View Boulevard  
Rensselaer, New York 12144

**(518) 283-0131**

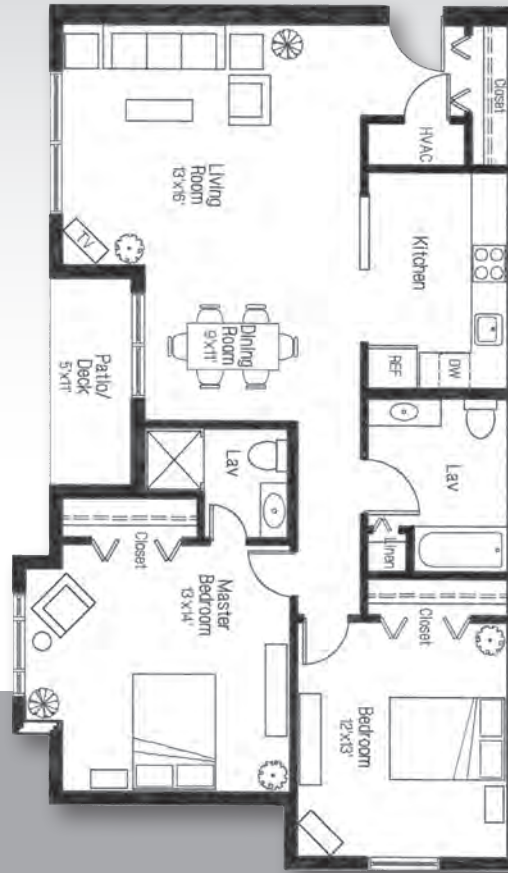


# Partridge Hill Apartments

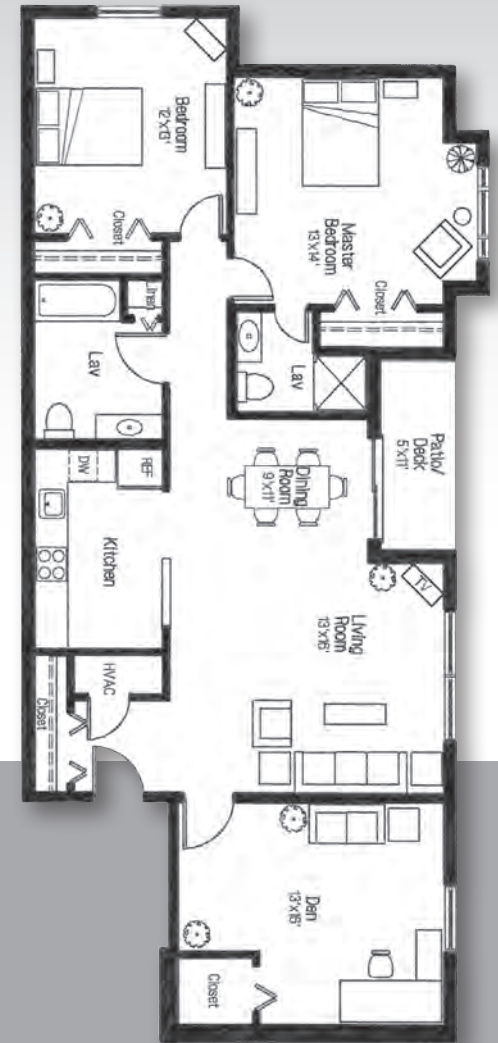
*1 Bedroom*



*2 Bedroom*



*2 Bedroom w/Den*



Information deemed reliable, but not guaranteed by Rosetti Properties.  
All dimensions are approximate.  
Contents of this brochure are subject to change without notice.